



## EV CHARGING STATION FOUNDATION - GEN 3 LEVEL 1 - 2 FOUNDATION

To accommodate the sharp increase in demand for electric vehicle (EV) charging stations, contractors need an EV Foundation Solution that is light, durable, quick and easy to install with minimal equipment and no concrete needed to install. This foundation solution is durable, cost-effective, and future-proof.

**PLP's EV Charging Station Foundation - Gen 3** is a pre-fabricated, precision-engineered solution for EV charging. This durable yet lightweight polypropylene foundation requires no specialized machinery; it can be installed by one person in one day. The EV Charging Station Foundation's design adapts to fit a wide range of chargers and charger pedestals/poles currently on the market. The aluminum top plate provides a clean finish, is easy to drill, and is an access point for repairs and future upgrades.

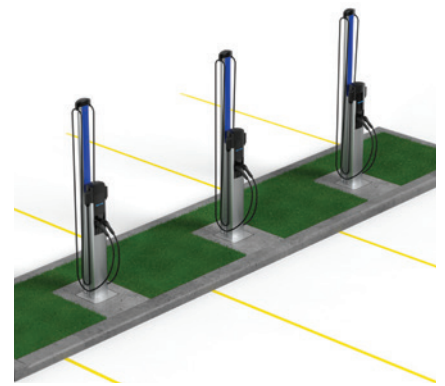
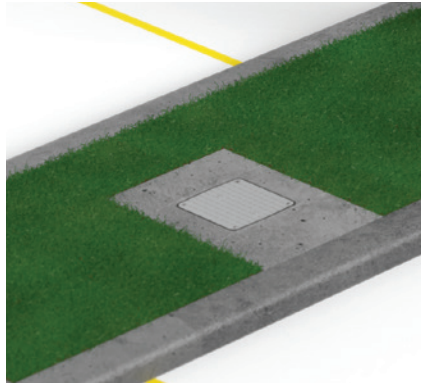
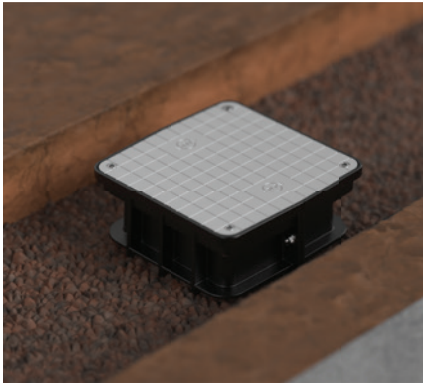
### FEATURES AND BENEFITS

- Lightweight (15 kg)
- Manufactured from recycled material
- Easy, one-day installation; no concrete pours or heavy machinery required
- Make-ready solution that prevents future infrastructure changes
- Engineered solution creates a clean, uniform appearance
- Top plate can be modified to fit different Level 1 to 2 charging stations
- Charger agnostic-replaceable top plate for replacement/upgrading charger technology
- Extensive testing program
- Expandable to accommodate Level 3 chargers
- Collar option to accommodate sloping ground



## FUTURE-PROOF

- Make-ready solution prevents future infrastructure disruptions. Install multiple foundations today and add charging units over time, mitigating the need to break ground as the demand increases.
- Universal fitting system easily accommodates different Level 1 and 2 charging station models
- Cast aluminum top plate access point makes for easy repairs and replacements



## ENGINEERED SOLUTION

- **Foundation** allows the charger to be installed, powered, and commissioned immediately; no waiting for concrete to cure
- **Top Plate** can be easily drilled and fitted in the field to fit a wide range of charging models
- Collar to accommodate sloping ground installation
- Expandable to accommodate a larger charger footprint (Level 3 chargers)
- Pre-drilling is available, contact your PLP Representative for more information



Foundation



Collar Option

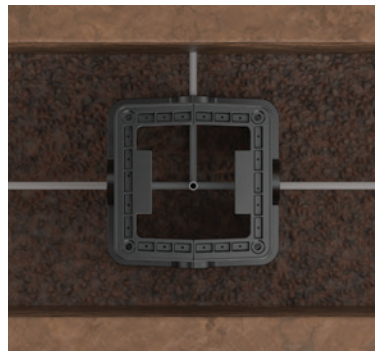


Expanded  
(1 axis)

## VERSATILE

### Multiple Wiring Configurations

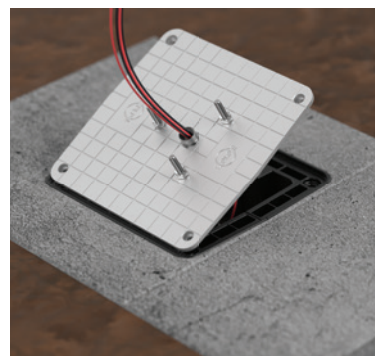
- Daisy-chain
- Dead-heading
- Change-of-direction
- Accepts up to 150 mm conduit
- Expandable (wide spacer and extended top plate)



## FLEXIBLE

### Creates a Convenient Access Point

- Top plate provides easy access for future repairs
- Top plate is made of cast aluminum, easy to drill
- Accommodates Level 1 to 2 chargers and charger pedestals



## DURABLE

### Designed and Tested to Withstand Harsh Environmental Conditions

- US Tier 15-Rated (10 Tonne compression strength)
- 150 mph wind tested
- High water table resistant
- Frost heave resistant





## SPECIFICATIONS

Material	Weight with Lid	Rating	Horizontal Load Testing <sup>2</sup>	Vertical Load Testing Maximum
Body: Polypropylene Top Plate: Aluminum Alloy	15 kg	US Tier 15 Rated <sup>1</sup>	140 mph	10,000 kg (2204 lb) Maximum scale

<sup>1</sup> Compression testing of 10 Tonne on the foundation and lid with no failure.

<sup>2</sup> Foundation installed in coarse compacted gravel with no concrete and no rebar, at grade, showed minor damage at 140 mph wind (hurricane loading).

## Ordering Information

Catalog Number	Description
5600136	EV Charger Foundation Gen 3
5600114	Top Plate (Blank)
5600138	Collar Set (for inclined surface installs)
	Spacer Set (2 pieces)
	Top Plate Gen 3 (extended 1-axis) Rectangle
	Top Plate (extended 2-axis) XL Square



Lightweight, easy to carry



**For all enquiries please contact your nearest Cable Services branch:**

**CS - Wrexham** Tel: 01978 340450 • E: sales@cableservices.co.uk  
**CS - Stone** Tel: 01785 825970 • E: central@cableservices.co.uk  
**CS - Liverpool** Tel: 0151 9339022 • E: liverpool@cableservices.co.uk

**CS - Swindon** Tel: 01793 953399 • E: swindon@cableservices.co.uk  
**CS - Glasgow** Tel: 0141 6212060 • E: scotland@cableservices.co.uk  
**CS - International** Tel: 01978 340452 • E: export@cableservices.co.uk

For further information please visit: [www.cableservices.co.uk](http://www.cableservices.co.uk) or follow us on